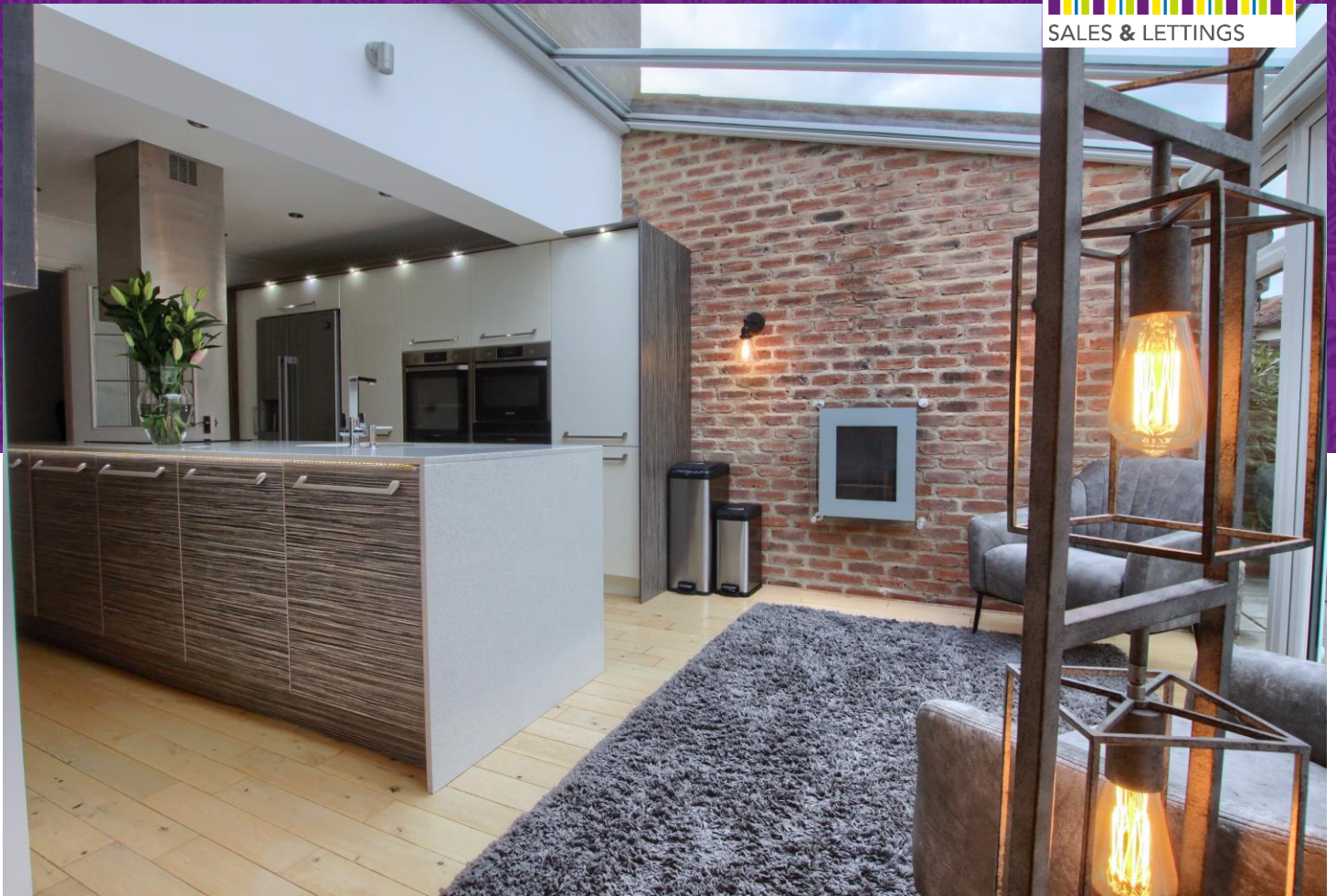


Hillbrook Crescent



A truly outstanding property

Unrecognisable from its original layout and specification

Upgraded, extended, and improved, with little expense spared

Stunning feature kitchen with large island and integral appliances

Open-plan and contemporary

£265,000



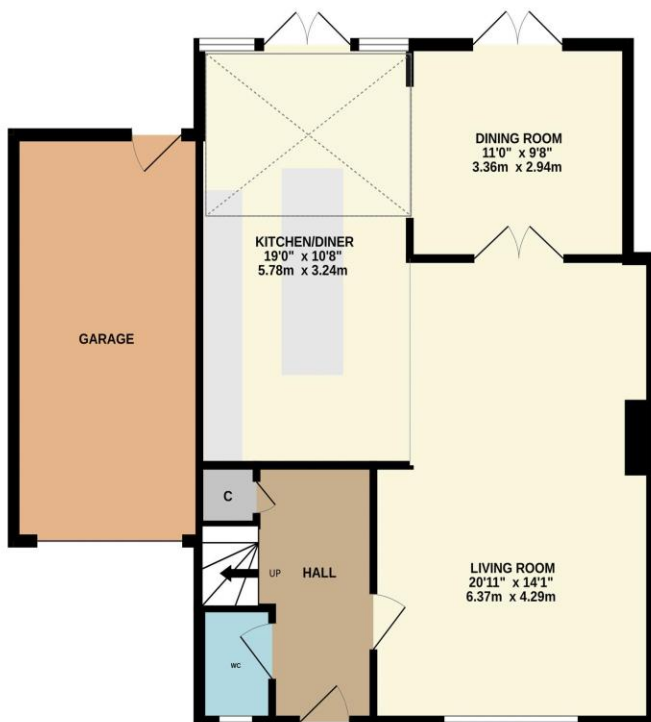
Multi-Award Wining

STUNNING! Unrecognisable from its original layout and finish, this truly impressive and genuinely 'bespoke' property has undergone dramatic, and superb changes. The internal accommodation has been transformed to provide a generous, flowing, and contemporary family living space, delivering a high quality finish, with little expense spared.

Packed with quality and attention to detail, with numerous 'stand out' features - the 'jaw dropping' kitchen with large feature island, the 'half glass/half tile' rear extension and impressive bathrooms, immediately spring to mind, this is a property that really does require internal inspection to be fully appreciated. The quality does not stop there, the fabulous rear garden has been landscaped, with a wrap-around, extensive patio/entertaining area, well-tended lawn, and external lighting, whilst the front drive has been widened and approaches the garage.

Briefly the internal accommodation comprises an entrance hall, cloakroom/WC, a large, remodelled lounge that flows into the 'high end' kitchen area, which in-turn, runs into the 'glass roofed' dining space with a feature 'reclaimed London brick' wall, from which an open double doorway leads to the additional living space to complete the ground floor. The first-floor layout remains the same layout but still packs a punch, stylishly decorated and boasting refits to the 'Master' ensuite and family bathroom. Unreservedly recommended by Ingleby Homes.

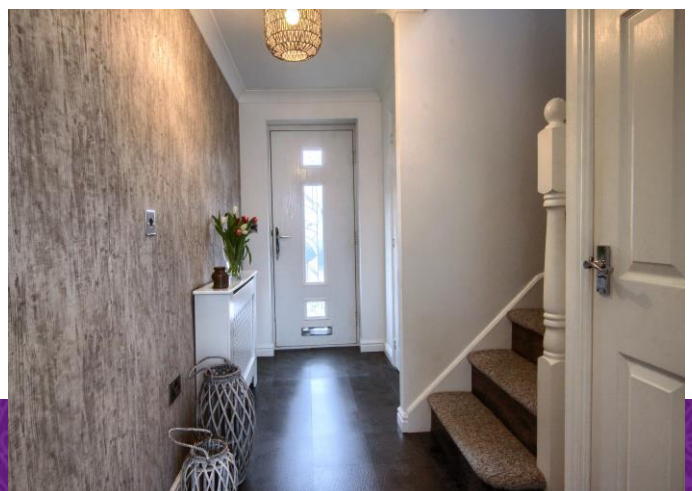
GROUND FLOOR



1ST FLOOR



“The Ingleby Barwick Experts”





Tenure: Freehold

Council Tax Band: D

EPC Rating: C



AGENTS NOTE: Every care has been taken with the preparation of these details, but they are for general guidance only. Measurements and dimensions are approximate, and any fixtures or fittings shown in photography does not infer that they are to be included within the sale. The agent has not tested any appliances or supplies and professional verification of these should be sought prior to purchase if required. These particulars do not constitute a contract or part of a contract.